

WELCOME

# Aboriginal Cultural Heritage Study

## Implementation

# BACKGROUND

## History of Parramatta:

- 1st viable colonial settlement
- Aboriginal community that is reasonably well documented
- Contact history well documented and interesting
- Colonial and contact history is of national significance

# Attitude to Parramatta's History

- Largely ignored and not valued until recently
- REP Parramatta's heritage was identified as the key to the identity of the city and necessary to underpin the future success of the city
- NSW Heritage Office moved to Parramatta

# Aboriginal Heritage

- Legislation protects this heritage at Federal and State levels
- Planning documents have had requirements to protect Aboriginal heritage at least since the mid 1990's
- Largely ignored as valuable heritage

# Why Have We Done This Study?

- Aboriginality identified as one of the three important cultural identifiers for the city in 1993. Others are 'multiculturalism' and 'heritage'
- To assist the implementation of our planning instruments
- To ensure that Council complies with legislation regarding Aboriginal Heritage
- To formalise Aboriginal heritage sites so that they have the same protection as colonial sites, minimising conflict between colonial and Aboriginal heritage'.
- So we know what we have or the potential. There is now decades of work underpinning the colonial heritage of the city. This is the first study in this area.
- To acknowledge and respect the Indigenous community and their heritage.

## Form of the Study

- Integrated Planning approach. Not just about the planning regulations.
- Provides a summary of all the legislation and relevant history of Parramatta in the one place.
- Will not assist developers directly. It is a base document for us. As studies come in they will add to the knowledge of the heritage of the city.

# **Why should we do this? Is it really important? Who cares? Reasons fall into a number of categories**

- Social
- Economic
- Cultural
- Ecological

# Aboriginal Heritage Study - Implementation

- Implementation of the study through the DA process
- Information sheet for handout to public
- 149 certificates
- Keeping the system up to date
- Field training – what to look for

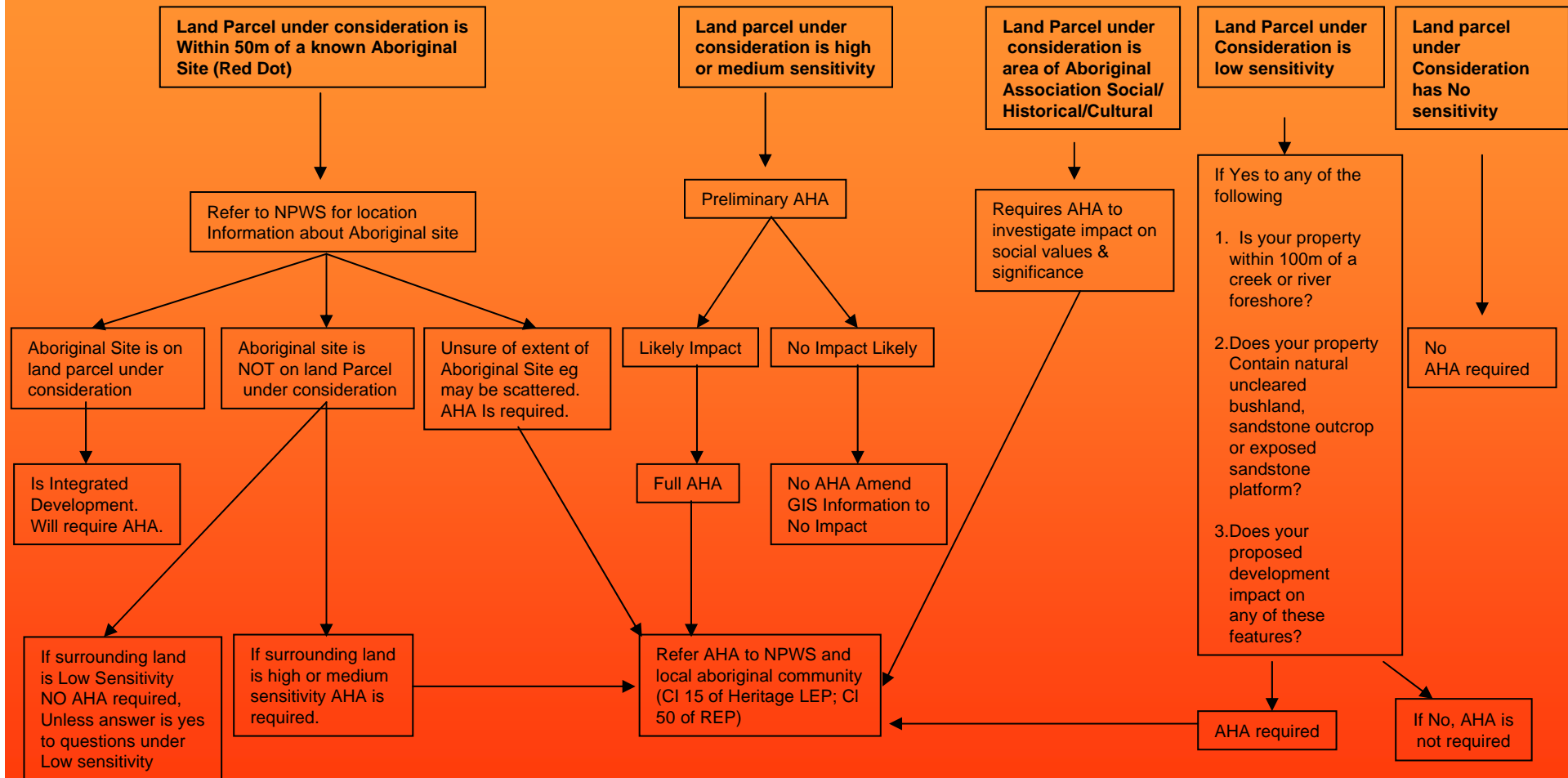
## Implementation through the DA process

- Clause 15 Heritage LEP, Clause 50 REP
- Consider Heritage Impact Statement (referred to as Aboriginal Heritage Assessment in study) if development likely to impact on Aboriginal place. This includes known and potential sites with physical remnants of occupation by Aboriginal people, or a sacred site of historical/social significance to Aboriginal people.
- If consent is to be granted, refer Heritage Impact Statement and consider comments from NPWS & local Aboriginal communities if received within 28 days of referral.

## When is an Aboriginal Heritage Assessment required?

- Depends on the sensitivity classification of the property. Sensitivity classification will be available in map format on the GIS and for individual properties in Pathways.
- The public will have to contact Customer Service to get this information.
- The sensitivity classifications will also be indicated on Section 149(5) planning certificates.
- Once you know the sensitivity classification, follow the flow chart.

# Aboriginal Heritage Study



# Information sheet

Information sheet for public has been prepared:

- Explains process for Aboriginal Heritage Assessment, who to contact to get an assessment prepared,
- Contact details for local Aboriginal communities
- Will be available from Customer service. Also Council's website (may not be immediate).

# Section 149 Planning Certificates

- Sensitivity Information on Sec 149(5) certificates
- It is proposed that known Aboriginal sites (recorded in NPWS Register) will go on Sec 149(2) certificates, but this will first require amendment of Heritage LEP and REP to include the registered sites as heritage items.

# Updating the system

- Development Services Unit to keep a register of all Aboriginal Heritage Assessments received and record the findings of the assessment.
- This will be used to update the sensitivity classification eg from high to no sensitivity if nothing found; registered site if something is found.
- Sensitivity information on GIS and Pathways to be updated quarterly.

# Where to From Here?

- Field Training – what to look for on-site
- Notice in Parramatta Advertiser to inform public of need to submit an Aboriginal Heritage Assessment with DAs if required.
- Review current DAs, any recently submitted significant development, ask for Aboriginal Heritage Assessment if required.
- Consideration of need for Aboriginal Heritage Assessment for all DAs to commence in conjunction with newspaper notice.

THANK YOU